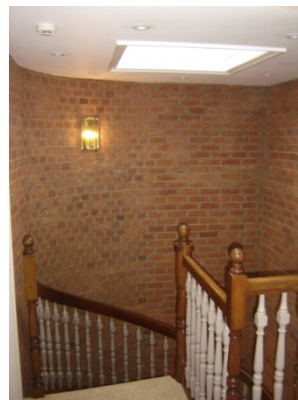


This project involved the total refurbishment of a mews house over three floors together with new flat roof coverings and external decorations.

Internally, the property was fitted at ground floor level with:

- A purpose made oak kitchen with granite worktops
- A utility room including toilet and showering facilities
- The dining room and entrance hall were fitted with new timber floors



The large circular open plan staircase was refurbished and re-polished. The bedrooms on the upper floors were fitted with purpose made wardrobes and each bedroom had an en-suite shower rooms.



The property was decorated internally to a very high specification including wall coverings and paint finishes. This project also included the provision of carpets and soft furnishings.